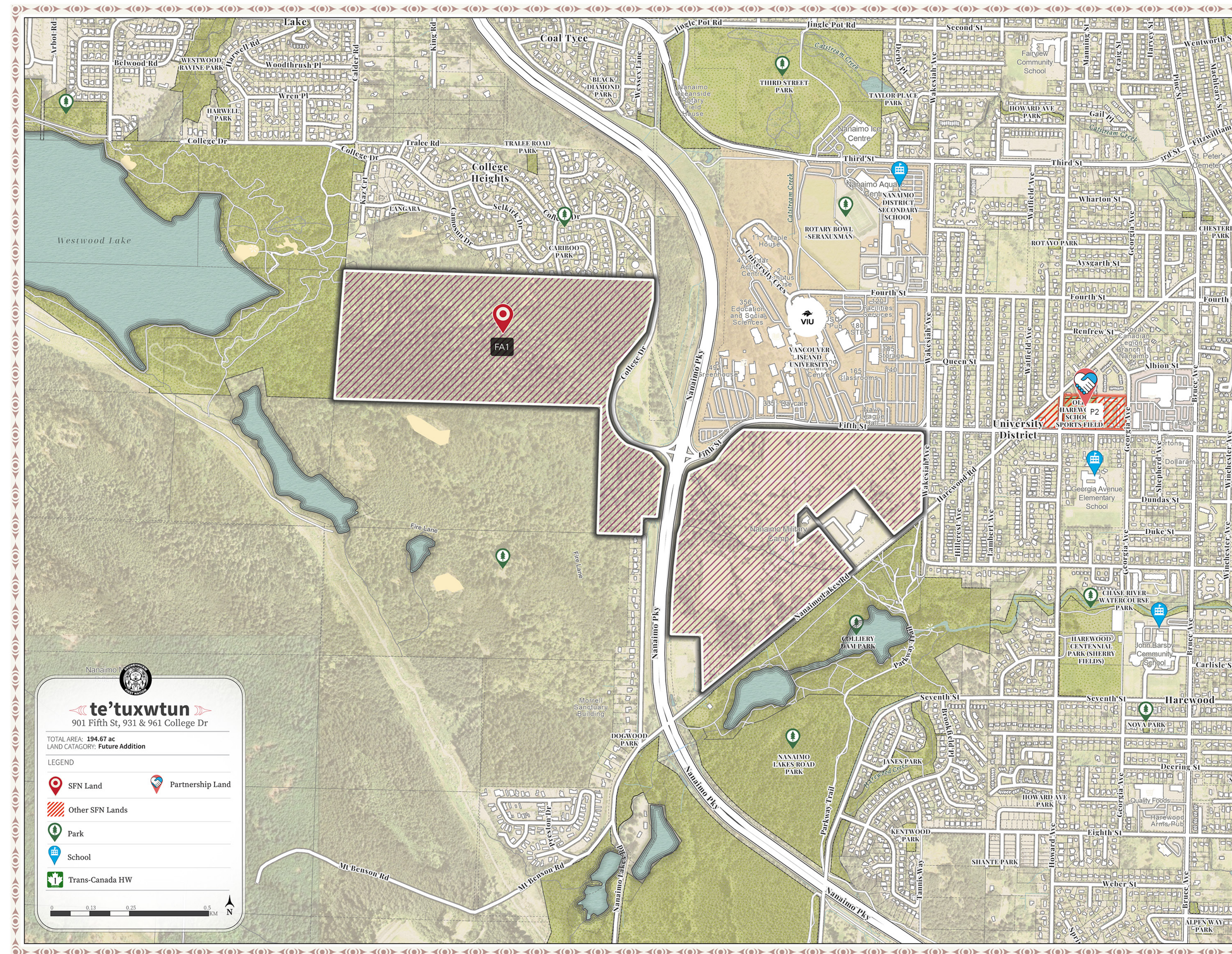




te'tuxwtun ADDITION TO RESERVE

Poster 1/2



PARCEL SIZE	194.67 acres
CIVIC ADDRESS	901 Fifth Street, 931 & 961 College Drive
OWNERSHIP TYPE	Future Addition

Your voice matters

This winter, members will be asked to vote on whether Snuneymuxw First Nation should enter a 120-year headlease with Petroglyph Development Group, which would manage a 25.6-acre portion of te'tuxwtun lands during that time.

This vote is about more than just land planning. It is an important step in restoring our presence across our territory. A “yes” vote would help unlock economic opportunities to support Nation building.



Learn more and share your ideas by
visiting www.snuneymuxw.ca/cp

OVERVIEW

Located at the base of te'tuxwtun and adjacent to Vancouver Island University, this site has a very layered history. It was a traditional hunting and gathering ground for Snuneymuxw, then used for coal mining and agriculture by the Western Fuel Co. before being transformed into Nanaimo Military Camp. Later, Nanaimo Indian Hospital was established here. The site overlooks the city and the ocean and has a varying degree of slope. The upper parcel has a steep slope and dense forests, while the lower parcel is a mix of open spaces and forested areas.



FORMER INDIAN HOSPITAL SITE



NORTH VIEW ALONG PARKWAY

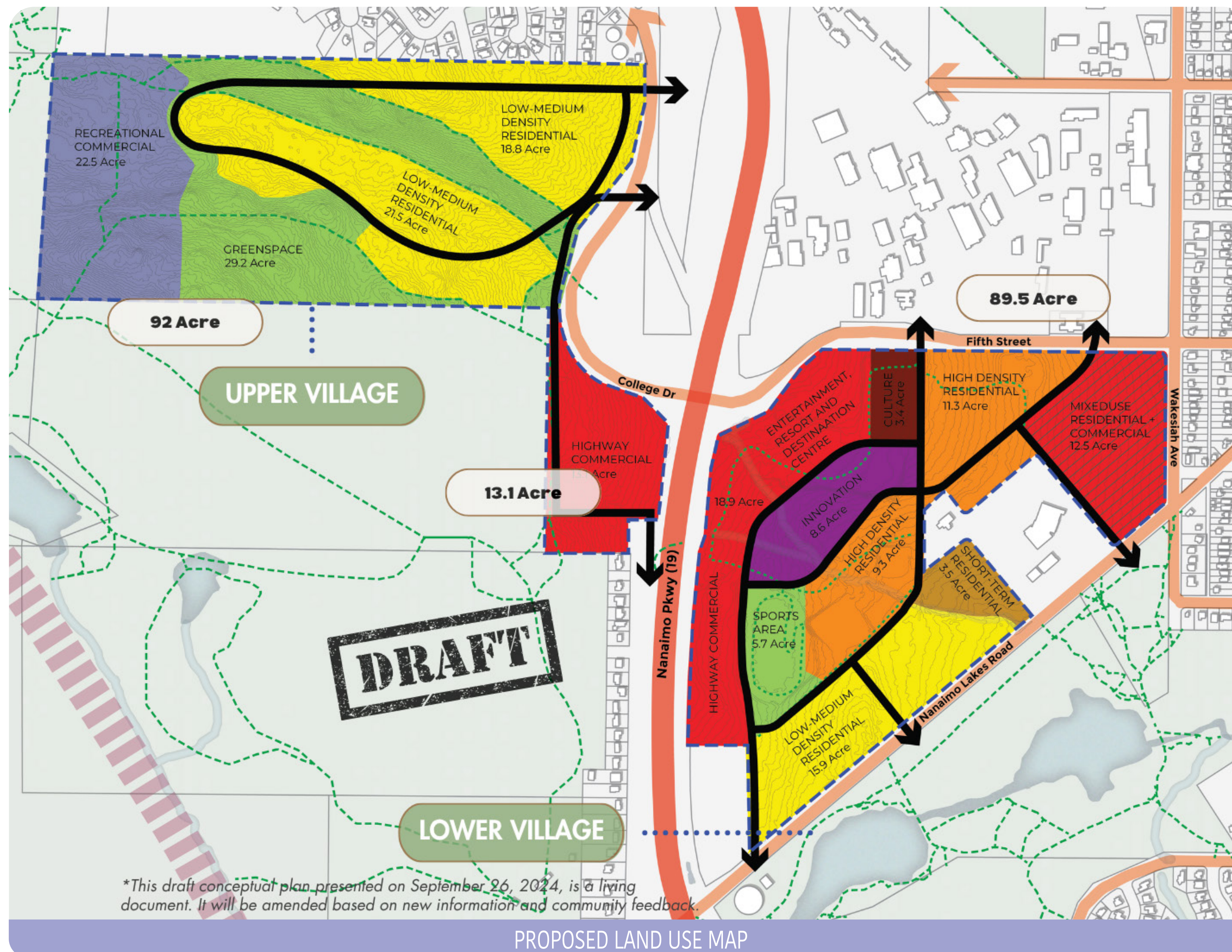


FIFTH AND WAKESIAH



te'tuxwtun ADDITION TO RESERVE

Poster 2/2



te'tuxwtun means “grandmother of all surrounding mountains” and is also known as Mount Benson

OPPORTUNITIES

- Proximity to Vancouver Island University and NDSS, with potential to serve students and professionals.
- Well connected through transportation routes, along the highway.
- Proximity to residential neighbourhoods, Colliery Dam Park and Nanaimo Aquatic and Ice Centre.
- Existing natural environment, mature **thuthíqut** (trees) and seasonal stream, with a beautiful view towards the ocean, the coast mountains and the mainland.
- Operating business and developing for economic purposes on reserve land offers tax benefits and more flexible development options.

CONSTRAINTS

- Proximity to abandoned coal mines causes risk of underground hazards, especially in the corner of Fifth St and Wakesiah Avenue in lower parcel.
- Seasonal stream located in the central part of the lower parcel.
- Steep slopes and dense forest are present in various portions of the site.
- Impact of previous developments (Indian hospital, DND development, septic field).
- Noise pollution from the highway.

COMMUNITY FEEDBACK TO DATE

- Including a monument or other element that recognizes and educates about history and the impact of the Indian hospital on the site.
- Interest in mixed-use development that provides economic opportunity for SFN members.
- Interest in including a daycare for members.
- Interest in having access to harvest medicinal plants and **sthumum** (berries).



NORTHEAST VIEW FROM PARKWAY



TOP OF LOWER PARCEL



LOOKING WEST TOWARDS PARKWAY