

# Snuneymuxw News

Informing the people of the Snuneymuxw First Nation about issues that matter

## Table of Contents:

- **Snuneymuxw x Fortis Agreement**
- **Flu and Covid vaccine clinics**
- **Drinking water class action**
- **JANT 2023**
- **VIU Campus Tours**
- **Academic and trades support**
- **Parents & Caregivers of Pre-teens & Teens**
- **Firearm Safety Course**
- **PDG Firewood Notice**
- **New year, new approach!**
- **Job posting - QQS Support Worker**
- **Job posting - Western Forest Products**
- **Youth Centre and Gym hours of operation**
- **SA dates**
- **Wildlife + dog notice**
- **Counselling support information**
- **SFN contact info**

Snuneymuxw News is published weekly.

Snuneymuxw First Nation, 668 Centre St., Nanaimo, B.C. V9R 4Z4

Tel: 250-740-2300, 1-888-636-8789 [news@snuneymuxw.ca](mailto:news@snuneymuxw.ca)

**February 16, 2023**



## News Release

FOR IMMEDIATE RELEASE

# Snuneymuxw First Nation and FortisBC Holdings Inc. sign agreement for Tilbury LNG projects, strengthening long-standing relationship

**Snuneymuxw Territory – January 27, 2023** – FortisBC Holdings Inc. (“FortisBC”) and Snuneymuxw First Nation (“Snuneymuxw”) are pleased to announce an agreement to work in close collaboration on the Tilbury LNG Projects. On January 26, 2023, Snuneymuxw Chief Mike Wyse invited FortisBC President and CEO Roger Dall’Antonia to sign the agreement on Snuneymuxw traditional territory.

The agreement respects Snuneymuxw First Nation’s rights in relation to the potential Project impacts and represents a commitment to share benefits related to the Tilbury Projects. Snuneymuxw First Nation has committed to supporting Tilbury Projects and participating in regulatory processes associated with the Tilbury facility including Tilbury LNG Storage Expansion Project and the Tilbury Marine Jetty Project. The agreement also ensures Fortis is supporting Snuneymuxw First Nation’s **community members through educational opportunities, relevant training and continued investments in the community.**

**“This agreement is important to Snuneymuxw for several reasons,” says Snuneymuxw Chief Mike Wyse. “Fortis recognizes the importance of a relationship with us and respects our Aboriginal and Treaty rights within our traditional territory and waters. We know that sustainable development requires project level decisions by government and regulators, and we support the Tilbury Projects that Fortis has developed and will build on. We look forward to working with Fortis, and other participants in this work, to ensure we share and build on the opportunities before us: mutual prosperity, employment, and protection of the environment.”**

**This agreement marks an important milestone on the path to true collaboration on projects that make up the Tilbury Expansion according to FortisBC President & CEO Roger Dall’Antonia. “Coming together to establish an agreement like this takes time and a lot of thoughtful discussion, but I know it is worthwhile. Contributions from Snuneymuxw First Nation will ensure FortisBC can plan and build Tilbury projects that will minimize environmental impacts and create benefits that will help support the Snuneymuxw community. We look forward to continuing our collaboration with Snuneymuxw.”**



snuneymuxw hulit lelum

1451 MacMillan Road, 250-740-2337

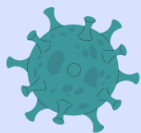
# Let's Get Vaccinated



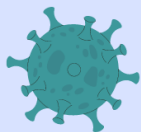
## FEBRUARY 2023

EVERY OTHER WEDNESDAY

FLU & Covid Clinic

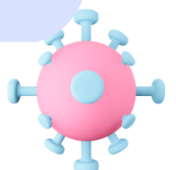


February 8th



February 22nd

Drop-in from 9:00am - 3:30pm





# **FIRST NATIONS DRINKING WATER CLASS ACTION SETTLEMENT**

**As per Settlement Agreement**

**SFN members living on  
IR 2, 3 & 4 between the  
dates of Jul 30, 2007-  
Jun 1, 2017, are eligible  
for funds.**

More info: [firstnationsdrinkingwater.ca](http://firstnationsdrinkingwater.ca)





- **The Settlement requires a confirmation list of SFN members impacted by water advisories. SFN will be using existing SFN records to reaffirm residency on impacted reserves. We will be able to reaffirm names on the list after February 26th.**
- **Related injury or illness? You could be entitled to more funds. Samantha Wesley is here to help with your medical information needs for your application.**
  - Samantha Wesley | (250) 824-1346  
samanthaw@snuneymuxw.ca
- **If applying on behalf of someone with a disability or who has passed away, please reach out for help.**
  - Louella and Marcee from Administration are available to help answer questions, and assist with applications.
  - Call (250) 740-2300 or email  
louellam@snuneymuxw.ca or  
marceeg@snuneymuxw.ca



**4 weeks  
to JANT**

**March 19 - 24**





# HELP-OUT AT JANT

LEARN MORE + SIGN-UP  
AT [JANT2023.COM](http://JANT2023.COM)

We need volunteers in the following areas:

- Facility Managers
- Registration
- Vendors support
- Merchandise sales support
- Games Directors
- Opening Ceremonies help
- Scorekeepers
- U17 support attaches
- U13 support attaches
- Security
- Venue greeters
- Clean-up

[WWW.JANT2023.COM](http://WWW.JANT2023.COM)





# Visit Us...

## Campus Tours

Visit the VIU Nanaimo Campus and have one of our Student Ambassadors show you around. Learn about our programs and the amazing community we offer here.

## In-Person Events

We are hosting lots of in-person events, you can see a full list on our webpage.

[connect.viu.ca](https://connect.viu.ca)

[viu.ca](https://viu.ca)

If you'd like a tour of the VIU campus, reach out to VIU ([connect@viu.ca](mailto:connect@viu.ca)) and ask to be shown around the campus.

You can also watch the [Campus Tour video on YouTube](https://tinyurl.com/34f8sbmc). [<https://tinyurl.com/34f8sbmc>]

More info: [connect.viu.ca](https://connect.viu.ca)



# POST SECONDARY

ACADEMIC AND TRADES SUPPORT



## SFN SUPPORT AVAILABLE

- Up to \$9K tuition and text book support
- \$1,510/month living allowance
- Heavy Operating certification support.

## DEADLINE TO APPLY

**APRIL 30, 2023**

## DETAILS

1. Fill out and submit post secondary support form by 11:59pm EST on April 30, 2023. Please contact Nancy Seward for the form at [nancys@snuneymuxw.ca](mailto:nancys@snuneymuxw.ca).
2. Input key information, including:
  - Name of institution
  - Tuition and text book costs
  - Start and end date of courses/program
  - New post-secondary students need to submit a one page essay outlining their career goals
3. Connect with Nancy to discuss tuition needs.
4. Please email Nancy if you're interested in reviewing our relevant policy document.



**Nancy Seward, [nancys@snuneymuxw.ca](mailto:nancys@snuneymuxw.ca)**





# **Connect** **RECLAIMING** **CONNECTIONS**

## Parents and Caregivers

FUN role plays & thought provoking presentations

Communication doesn't have to be hard

**For Parents & Caregivers of Pre-teens & Teens**

**\*10 Sessions \***

Hoping to launch soon

**Spots Limited, Registration Required**

Certification for those who complete 😊

**Facilitated by: Sabrina Ross & Melinda Sinclair**

Questions & to register contact Sabrina at [sabrinar@snuneymuxw.ca](mailto:sabrinar@snuneymuxw.ca)

or call 250-323-9025





# FIREARM SAFETY

**Interested in taking a firearms safety course to obtain a Possession Acquisition License (PAL)? We are compiling a list, so please reach out if you'd like to be included.**

**To register, email [juanm@snuneymuxw.ca](mailto:juanm@snuneymuxw.ca) or call 250-740-2329**



PETROGLYPH DEVELOPMENT GROUP  
668B CENTRE ST, NANAIMO B.C V9R 4Z4  
T: (250)-824-1572

**ATTENTION SNUNEYMUXW MEMBERS:**

Firewood deliveries are still available for Snuneymuxw Band Members who live within the Regional District of Nanaimo, these application forms will be accepted up until the middle of April, our firewood crew is working hard to fulfill previous orders. If you would like to submit a firewood request form; they can be found at the front desk at PDG'S main office.

If you have any other questions, please feel free to contact Christine at PDG'S main office.

Thank you!

*Contact info:*

*Christine Good  
668B Centre St., Nanaimo, BC, V9R 4Z4  
Email: ChristineG@Petroglyphdg.com  
T: (250) 824-1572  
www.petroglyphdg.com*





# ***Make 2023 your year!***

**New Year ~~New Me~~ .... New Approach 😊**

- Experiential exercises help you define what you want
- Vision Boards
- Prioritize & Strategize
- Smart Goals
- Self Care = Success

To Register call Sabrina @ the Health Center, 250-323-9025

**February 17  
+ Friday Evenings, 6pm - 8pm**

**SNACKS PROVIDED**

**Child minding on site for participants**



## JOB POSTING

### Support Worker - Preschool

#### JOB OVERVIEW

Under the direction of the qwam qwum stuwixwulh school (QQS) Principal and Snuneymuxw First Nation (SFN) Education Director, the Support Worker facilitates the inclusion of children requiring additional support in a preschool setting by functioning as a compatible member of a multi-disciplinary team (parents, care providers, therapists, other service providers) and providing one-on-one support. The Support Worker will work collaboratively with the QQS and SFN teams to provide behavior management support by developing skills that support the child in regulating behavior and emotions. This is a **part-time** (15 hours/week) **term** position until June 2023 and may continue for the 2023/24 school year.

#### Snuneymuxw Standards

Our values will guide us towards becoming a stronger, more effective organization with a positive and mutually beneficial work environment for everyone.

<b>Achievement</b>	Deliver what matters; ensure clarity of direction and unity of purpose; inspire excellence and strive for outstanding results
<b>Collaboration</b>	Work together to build successful teams and partnerships; be open, inclusive and share knowledge; seek, provide, and act on feedback
<b>Community Commitment</b>	Know our community and put them first; listen to and understand community needs; be responsive, close the loop and deliver on promises
<b>Integrity</b>	Own your actions, successes, and mistakes; act with transparency, honesty, and respect; do what you say you will do
<b>Innovation</b>	Look for ways to improve and create positive change; think broadly and take a wider viewpoint; be responsive to new ideas and opportunities

#### JOB RESPONSIBILITIES

- Works as a team member with preschool staff to plan and implement strategies and activities for inclusion.
- Contributes to the development and implementation of SFN's education goals and objectives.
- Assists in maintaining observational records and complete daily notes as required by the school.
- Participates in ongoing evaluations of plans, goals, and objectives.
- Works as a team member to plan and implement daily activities and experiences to meet goals and objectives of Child and Family Service Plans that reflect the choices and priorities identified by their parents, the school, and the community.



# Snuneymuxw

First Nation

---

[www.snuneymuxw.ca](http://www.snuneymuxw.ca)

- Provides one-on-one support as needed.
- Contributes to the development of inclusive communities.
- Participates in team meetings, where appropriate.
- Contributes to an effective staff team to ensure the delivery of quality services.
- Plans and implements personal and professional development.
- Collaborates with the care team and preschool staff to provide behavior management support to children and families by developing positive skills that increase the child's chance of success to assist them in managing/stabilizing/regulating behavior and emotions.
- Works collaboratively with the community to build partnerships and identify community resources.
- Works as a team member to provide culturally appropriate daily experiences that support and promote the development of all children in the setting.
- Encourages and models social interaction with the child(ren)'s peers.
- Maintains client confidentiality, professional and Snuneymuxw' code of ethics.
- Performs other related duties as assigned by the Principal and Education management.

## **JOB REQUIREMENTS**

### **Education:**

- Grade 12 Diploma or GED
- Early Childhood Educator (ECE), Early Childhood Education Assistant (ECEA) and/or Early Childhood Education Special Educator and current BC License to Practice as an ECE/ECEA and/or Early Childhood Special Educator is an asset.
- Valid first aid/CPR certification is an asset.

### **Experience:**

- Experience working with children.
- Experience working as an ECE/ECEA or as a support worker in a school environment is an asset.

### **Knowledge, Skills and Abilities:**

- Be familiar with applicable health and safety policies and procedures.
- Experience with children with special needs and their families.
- Previous experience working with Indigenous communities preferred.
- Ability to develop and maintain a warm, caring, responsive relationship with the children.
- Ability to establish and maintain supportive, collaborative relationships with families and teammates.
- Ability to maintain confidentiality.
- Ability to maintain a positive, professional, non-judgmental attitude.

**Please submit your current resume and cover letter to:**

Snuneymuxw First Nation  
Attention: HR  
668 Centre Street, Nanaimo, BC, V9R 4Z4  
or email: [HR@snuneymuxw.ca](mailto:HR@snuneymuxw.ca)



**Western Forest Products Inc.**  
DEFINING A HIGHER STANDARD™



**Job Posting**  
**Entry Level Production Labourers**  
**Ladysmith, BC**  
**Nanaimo, BC**

**THE OPPORTUNITY**

- We currently have multiple openings for **Entry Level Production & Weekend Cleanup Labourers** based at our sawmills in **Ladysmith and Nanaimo, BC.**
- **What We Offer:** Competitive unionized wage rates ranging between **\$27.93 – \$32.54** as per the respective collective agreements. A safe work environment and opportunities for growth, ongoing training and a long-term career. Benefits and pension are provided through the union.
- **Who You Are:** You have an excellent safety record and demonstrated commitment to safety. A strong work ethic, accountable and dependable, able to prioritize work, always willing to lend a hand and pitch in when needed, and not afraid to work hard! You demonstrate the ability to work both as part of a team and with minimal supervision and have the desire to participate in an organization committed to continuous improvement.
- **Shifts:**
- **Entry Level Production:** All employees must be available Monday-Friday for all shifts including day, afternoon and graveyard shifts. Employees typically begin on an on-call basis and are required to work a variety of shifts until a full-time position becomes available.
- **Weekend Cleanup:** All employees must be available for Saturday and Sunday day shifts.
- *These positions are considered safety sensitive, all successful candidates will be subject to a pre-employment drug test.*
- **RESPONSIBILITIES**
- All employees will start in general labour or cleanup positions, and then progress from there into a variety of roles including machine operators.
- All employees must maintain a safe and clean work area.
- Supporting other areas of the operations as needed.

**QUALIFICATIONS**

- Our ideal candidates have previous experience working in a labour job in a safety sensitive environment (industrial or trades related environment).
- **HOWEVER**, we will train people without this background if they have the right attitude and want to learn!
- First Aid/WHMIS preferred – **preference is always given to candidates who have OFA 3.**
- Mobile equipment certification/experience an asset.
- Lumber grading ticket a definite asset.

**YOUR CAREER**

At Western Forest Products, we believe our most significant asset is our people. Investing in our people brings value and success to our business, ensuring a safe, engaged, productive and continuously

Vancouver Corporate Office, Suite 800 – 1055 West Georgia Street  
Royal Centre, PO Box 11122, Vancouver, BC V6E 3P3 | 604.648.4500

[www.westernforest.com](http://www.westernforest.com)





## Western Forest Products Inc.

DEFINING A HIGHER STANDARD™



improving workplace. We offer challenging opportunities working alongside the best in the industry to meet your career and professional development goals while providing competitive total rewards and recognition. From our timberlands to mills to our corporate and regional offices, we offer rewarding opportunities in every facet of our business.

### WESTERN OVERVIEW

Western Forest Products is a leading forest products company that manufactures high-quality wood products and sustainably manages forests. Headquartered in Vancouver, British Columbia with operations in the coastal region of B.C. and Washington State, Western meets the needs of customers worldwide with a specialty wood products focus and diverse product offering. Our large investment in manufacturing and progressive approach to safe and sustainable forestry practices ensures the health and prosperity of our business, forests and communities for generations to come.

To apply for this role please follow the link below or scan the QR code:

[https://workforcenow.adp.com/mascsr/default/mdf/recruitment/recruitment.html?cid=7123675f-b0ca-4b68-9fea-f24295bd6993&cclid=2637603463\\_3978&jobId=460074&lang=en\\_CA&source=CC4](https://workforcenow.adp.com/mascsr/default/mdf/recruitment/recruitment.html?cid=7123675f-b0ca-4b68-9fea-f24295bd6993&cclid=2637603463_3978&jobId=460074&lang=en_CA&source=CC4)





# **SNUNEYMUXW YOUTH CENTRE & GYM OPENING HOURS**

---

## **YOUTH DROP-IN**

4 pm - 9 pm	Tuesday - Friday
4 pm - 10 pm	Saturday
	CLOSED Sun/Mon

---

## **EARLY BIRD FITNESS**

6 am - 8 am	Monday - Friday
	CLOSED Sat/Sun

---

## **GYM & FACILITIES OPEN**

8 pm - 9 pm	Monday - Friday
	CLOSED Sat/Sun

---

[www.snuneymuxw.ca/events-calendar](http://www.snuneymuxw.ca/events-calendar)

Dano Thorne, SFN Recreation Manager  
[Danot@snuneymuxw.ca](mailto:Danot@snuneymuxw.ca)

**Please note, we now have a drop-in fee for users, \$2/session/gym workout. This fee will go towards the maintenance and repair of gym, workout and sporting equipment.**



## 2023 SOCIAL ASSISTANCE DATES

### MID-MONTH

**JAN. 04/23**

**FEB. 01/23**

**MAR. 08/23**

**APR. 05/23**

**MAY 03/23**

**JUN. 07/23**

**JUL. 05/23**

**AUG. 09/23**

**SEPT. 06/23**

**OCT. 11/23**

**NOV. 08/23**

**DEC. 06/23**

### S/A DAYS

**JAN. 18, 2023 (FOR FEBUARY)**

**FEB. 15, 2023 (FOR MARCH)**

**MAR. 22, 2023 (FOR APRIL)**

**APR. 19, 2023 (FOR MAY)**

**MAY 17, 2023 (FOR JUNE)**

**JUN. 21, 2023 (FOR JULY)**

**JUL. 19, 2023 (FOR AUGUST)**

**AUG. 23, 2023 (FOR September)**

**SEPT. 20, 2023 (FOR October)**

**OCT. 25, 2023 (FOR NOVEMBER)**

**NOV. 22, 2023 (FOR December)**

**(TBA) DEC. (FOR JANUARY)**



## Wildlife reminder



Snuneymuxw IR# 2,3,4 are surrounded by forested land that is home to a variety of creatures big and small. Predators such as bears and cougars will wonder into residential areas in pursuit of prey. Animal sightings on IR 2,3 and 4 have been low so far, however since the school has been built Mr. Bear has been caught on school surveillance late at night and early mornings.

Parents, please keep an eye on your children playing outside or at the school park afterschool hours.

If you have fruit trees on your property please make sure you discard fruit when it drops, because decaying fruit attracts bears.

Hunters, please bring all deer, elk and bear remains to the mountains. Please bring fish remains back to the river.

**Cougars are predatory hunters and prefer to stalk their prey. If you see a cougar:**

- Never Run
- If seen, make sure that it knows that you see it and walk back slowly while keeping it in sight
- Make yourself bigger – raise your arms above your head or open your jacket wide open.
- Make loud noises while backing up slowly
- Never play dead

**Bears are omnivores and will scavenge. They eat anything including fruit, seeds and garbage.**

- Never Run
- If seen, make sure that it knows that you see it and walk back slowly while keeping it in sight
- Make yourself bigger ie..holding your arms and or jacket open
- Make Loud noises while backing up slowly
- Never play dead

**R.A.P.P. Hotline: 1877-952-7277 (24hr)**

Please call as soon as you see a cougar or bear.

This helps Conservation Officers track their movement.



## Who to Contact for Dog Related Issues



**Please call James Wesley or Richard White of SFN Infrastructure during regular business hours (8:00am to 4:00pm), at 250-740-2300. During non-business hours including weekends and holidays please contact James Wesley at 250-713-7402**

The SFN Dog Bylaw will be used as a guideline for these following situations:

- Stray dogs / dogs off-leash
- Aggressive dogs
- Nuisance dogs (i.e. continuous barking, howling)
- Neglect to an extent that is cruel or unnecessary

The process for dog related issues:

- A complaint is received by SFN Infrastructure
- A letter will be written from SFN Infrastructure to the offender in question (the claimant will remain confidential; the person making the complaint). The letter will contain details regarding the incident and will cite directly from the SFN Dog Bylaw.
- The letter will then be hand delivered to the offender in question. If the situation warrants the enforcement mechanism via Animal Control (as per the SFN Dog Bylaw) then Animal Control will be contacted and / or will deliver the letter to the offender themselves in severe circumstances.
- ***Animal Control enforces the SFN Dog Bylaw as well as other local area animal control bylaws.***



## SNUNEYMUXW HULIT LELUM SUPPORT SERVICES

### SFN Counselling Services

**SNUNEYMUXW HULIT LELUM**  
**1451 MACMILLAN RD., NANAIMO, B.C.**  
**OFFICE: 250-740-2337**

Our counsellors at SFN hulit lelum have completed trauma-informed, master's level university education and are certified counsellors.

Our counsellors are available Monday to Friday to support Snuneymuxw members.

Some of the areas that our counsellors may be able to help with include, but are not limited to:

- Anxiety
- Depression
- Grief & Loss
- Loss of relationships (friends, partners)
- Coping with anger
- Dealing with difficult emotions
- Coping skills / emotional regulation
- Self-esteem / self-worth
- Communication
- Creating healthy boundaries
- Coping with racism and discrimination
- Coping with impact of residential school and day school
- Concerns about your own, or someone else's substance use

If our counsellors determine that you may be better supported by another service provider (for example, someone who specializes in a particular area) they can help you navigate other options.



### ADDITIONAL HELPFUL RESOURCE INFO:

#### **SNUNEYMUXW EMPLOYEE BENEFITS:**

If you are employed with Snuneymuxw First Nation, you may be eligible for extended health benefits, such as confidential counselling services through the Employee & Family Assistance Plan. Please refer to your benefits package and/or speak to Human Resources to find out more and to verify if you are eligible.

#### **FNHA MENTAL HEALTH BENEFITS:**

If you are a status First Nations person living in B.C., you can access certain health & wellness benefits through First Nations Health Authority (FNHA) such as confidential counselling services. There are numerous counsellors to choose from on their mental health provider list. SFN counsellors are happy to support you with navigating the FNHA mental health provider list. For more information, please visit: [www.fnha.ca/benefits/mental-health](http://www.fnha.ca/benefits/mental-health)

#### **SNUNEYMUXW FAMILY ADVOCATE:**

Samantha Wesley supports families in Snuneymuxw who are connected with Child & Family Services.

*Remember: You are not alone. You have options.*

#### **CRISIS / DISTRESS RESOURCES:**

##### **KUU-US Crisis Line Society (24-hour)**

Adults/Elders: 250-723-4050

Child/Youth: 250-723-2040

Toll Free Line: 1-800-588-8717

##### **Vancouver Island Crisis Society (24-hour)**

Phone: 1-888-494-3888

Text: 250-800-3806 (6pm - 10pm)

Online chat: [www.vicrisis.ca](http://www.vicrisis.ca) (6pm – 10pm)

##### **National Residential School Crisis Line (24-hour)**

1-866-925-4419

##### **Hope For Wellness Help Line (24-hour)**

Offers immediate help to all Indigenous peoples across Canada

Toll-free Help Line: 1-855-242-3310

Online Chat: [www.hopeforwellness.ca](http://www.hopeforwellness.ca)

##### **Crisis Line Association of B.C. (24-hour)**

1-800-SUICIDE (1-800-784-2433)





## HOW TO ACCESS SFN COUNSELLING

**1.**

Call SFN hulit leum  
and ask to speak  
with a counsellor.  
250-740-2337



**2.**

We connect you with  
a counsellor (referral  
process).



**3.**

We call you when  
process is complete.



**4.**

We book your first  
appointment and  
look forward to  
welcoming you.



SNUNEYMUXW HULIT LELUM  
1451 MACMILLAN RD.,  
NANAIMO, B.C.  
Reception: 250 740 2337



## Garbage & Recycling

Recycling pickup                      Wednesday  
Garbage pickup                      Monday & Thursday

Please have your garbage and recycling out by 8:00 am on the day of the service

**Please remember that All recyclables MUST be in a clear plastic bag or in a bin. The recycling depot does not accept anything in a dark garbage bag.**

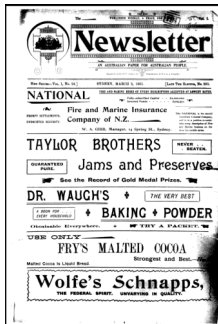
Are you interested in signing up to be on the list for delivering the Snuneymuxw News? .....

If so please call the Main office at 250-740-2300 and

ask for your name

to be added to the list of people who deliver the

SFN Newsletter.



### SFN MEMBERS—

#### PLEASE UPDATE YOUR CONTACT INFORMATION

Please call the office at: 250-740-2300 or email: [mail@snuneymuxw.ca](mailto:mail@snuneymuxw.ca)

Please provide your latest contact information including address, contact numbers, email and any other updated information.

*Thank you for your help!*

### Handy Numbers

SFN Office: 250-740-2300

Chief Administration Officer -

Joan Brown: 250-740-2300

Health Centre: 250-740-2337

QQS School: 250-754-3033

Daycare: 250-740-2348

Tuytaxun Store: 250-753-4214

Saysutshun: 250-754-7893

RCMP/non-emergency: 250-754-2345

## HEALTH CLINIC & EMERGENCY

**Cheryl Mooney 250-668-2644**

[cherylm@snuneymuxw.ca](mailto:cherylm@snuneymuxw.ca)

**Marine White 250-668-5244**

[marinaw@snuneymuxw.ca](mailto:marinaw@snuneymuxw.ca)

**Regan 250-616-3582**

[regans@snuneymuxw.ca](mailto:regans@snuneymuxw.ca)

### Housing

**Ashley 250-619—0137**

[ashleyw@snuneymuxw.ca](mailto:ashleyw@snuneymuxw.ca)

Check out the latest Nation job postings:

[www.snuneymuxw.ca](http://www.snuneymuxw.ca)

[www.facebook.com/  
SnuneymuxwFirstNation](http://www.facebook.com/SnuneymuxwFirstNation)

**Visit [www.snuneymuxw.ca](http://www.snuneymuxw.ca) for more info and to sign up to have the newsletter sent by email.**